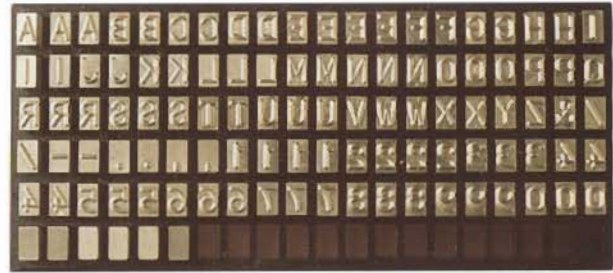
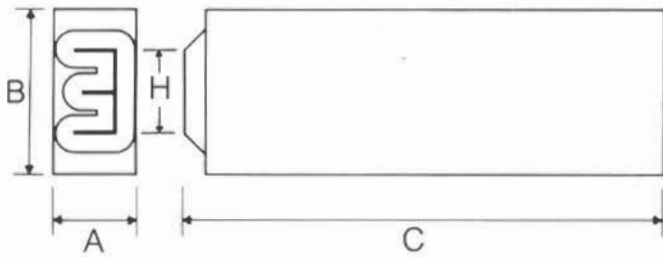


# INTERCHANGEABLE STEEL TYPE

## COMPOSITION OF SETS



| CHARACTER SIZE (H) | ACTUAL SIZE (HEIGHT ONLY)   | BLANK SIZE (A) x (B) x (C) | HAND HOLDER REFERENCE | No. OF PIECES PER HOLDER |
|--------------------|---|----------------------------|-----------------------|--------------------------|
| 1.0mm              | PRYOR 10MM I.S.T. PRYOR 10MM I.S.T. PRYOR 10MM I.S.T. PRYOR 10MM I.S.T. PRYOR | 1.6 x 3.2 x 15.87          | H3.2-20               | 12                       |
| 1.5mm              | PRYOR 15MM I.S.T. PRYOR 15MM I.S.T. PRYOR 15MM I.S.T. PRYOR                   | 1.6 x 3.2 x 15.87          | H3.2-20               | 12                       |
| 2.0mm              | PRYOR 20MM I.S.T. PRYOR 20MM I.S.T. PRYOR                                     | 2.0 x 6.35 x 19.05         | H6.35-29/H6.35-39     | 14/19                    |
| 2.5mm              | PRYOR 25MM I.S.T. PRYOR 25MM I.S.T. PRYOR                                     | 2.4 x 6.35 x 19.05         | H6.35-29/H6.35-39     | 12/16                    |
| 3.0mm              | PRYOR 30MM I.S.T. PRYOR 30MM I.S.T. PRYOR                                     | 3.2 x 6.35 x 19.05         | H6.35-29/H6.35-39     | 9/12                     |
| 4.0mm              | PRYOR 4.0MM I.S.T. PRYOR  | 4.0 x 8.0 x 19.05          | H8.0-39               | 9                        |
| 5.0mm              | PRYOR 5.0MM I.S.T. PRYOR  | 4.8 x 8.0 x 19.05          | H8.0-39               | 8                        |
| 6.0mm              | PRYOR 6.0MM I.S.T. PRYOR  | 6.4 x 9.5 x 19.05          | H9.6-40               | 6                        |
| 10.0mm             | PRYOR 10.0MM I.S.T. PRYOR   | 9.5 x 16.0 x 25.40         | H16-57                | 6                        |

Other type available from stock:-

**MINISTRESS** type for use in applications which dictate that lower stress levels are introduced into the component to be marked.

| Character Size | Blank Size        | Holder Ref. | No. of Pieces Per Holder |
|----------------|-------------------|-------------|--------------------------|
| 3.0mm          | 4.8 x 8.0 x 19.05 | H8.0-39     | 8                        |
| 5.0mm          | 6.4 x 9.5 x 19.05 | H9.6-40     | 6                        |



**DOTSTRESS** type for particularly delicate applications where even lower stress is required.

| Character Size | Blank Size        | Holder Ref. | No. of Pieces Per Holder |
|----------------|-------------------|-------------|--------------------------|
| 3.0mm          | 4.8 x 8.0 x 19.05 | H8.0-39     | 8                        |
| 5.0mm          | 6.4 x 9.5 x 19.05 | H9.6-40     | 6                        |

**HIGH SPEED STEEL** type where tougher components call for stronger type. Depending on the conditions, may give up to three times the life of ordinary type. Available in sizes 1.5, 2.0, 3.0, 4.0 and 5.0mm.

**WEDGE TYPE** The robust section makes this a natural choice for all roll marking applications. Available in sizes 1.5, 2.5, 3.0, 4.0 and 5.0mm for use in the Pryor standard RH300 rotary holder.

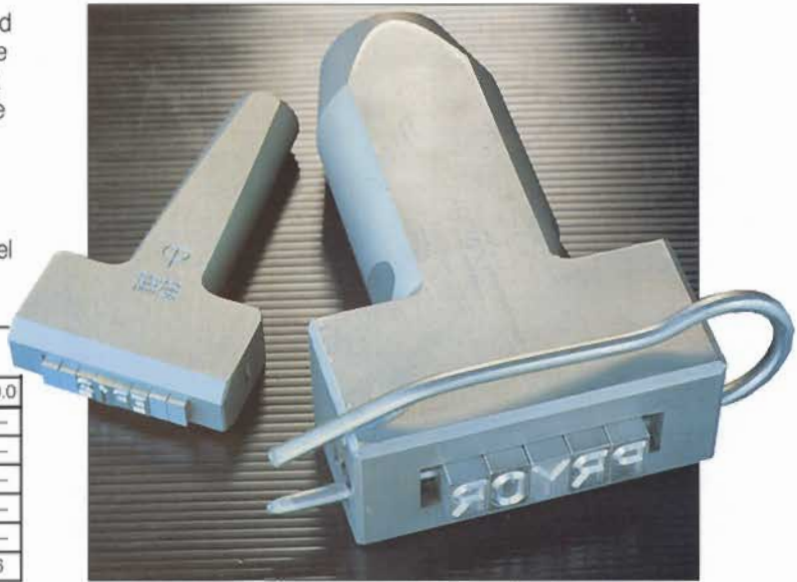


# STANDARD HOLDERS FOR PRYOR TYPE

To complement our range of Interchangeable Steel type and logo dies, we produce a standard range of hand and machine holders to suit most applications. If your operation does not allow you to take advantage of our standard range, then we would be happy to provide a quotation for a specially manufactured unit to suit your application, or to your own design.

**HAND HOLDERS** - to take standard Interchangeable Steel Type. Available in six sizes to accept type as follows:-

| Holder ref. | Capacity - number of types - one row only<br>type size (mm) |     |     |     |     |     |     |     |      |
|-------------|---|-----|-----|-----|-----|-----|-----|-----|------|
|             | 1.0   | 1.5 | 2.0 | 2.5 | 3.0 | 4.0 | 5.0 | 6.0 | 10.0 |
| H3.2-20     | 12  | 12  | —   | —   | —   | —   | —   | —   | —    |
| H6.35-29    | —   | —   | 14  | 12  | 9   | —   | —   | —   | —    |
| H6.35-39    | —   | —   | 19  | 16  | 12  | —   | —   | —   | —    |
| H8.0-39     | —   | —   | —   | —   | —   | 9   | 8   | —   | —    |
| H9.6-40     | —   | —   | —   | —   | —   | —   | —   | 6   | —    |
| H16-57      | —   | —   | —   | —   | —   | —   | —   | —   | 6    |



**MACHINE HOLDERS** - to take standard Wedge Type. RH300 Rotary Holder to suit Pryor machines (PMK.34, 35, 36, 70 and 80). The holder is supplied with spacers as follows - 60° fixed adjuster, 3 x 60° spacers 2 x 30° spacers.

| character size (mm) | 1.5 | 2.0 | 2.5 | 3.0 | 4.0 | 5.0 |
|---------------------|-----|-----|-----|-----|-----|-----|
| capacity            | 126 | 100 | 82  | 62  | 50  | 41  |

Whilst capacities of the holder are as shown, it must be remembered that the maximum stroke of the machines is: PMK 34-115mm, PMK 35-125mm, PMK 36-85mm, PMK 70-150mm, PMK 80-150. Therefore, this must be considered when deciding how many characters of any size of type are to be fitted into the holder.

## HOLDERS FOR PERCUSSION PRESSES

These are available in 2 part bodies and shanks in order that you can choose the best combination for your needs.

**Safety note** - Please remember that, before use, the shanks should be fixed in place with a thread-locking adhesive to avoid the body vibrating loose in operation. All the holder bodies have M12 threaded holes.

### BODIES

| Holder ref. | Capacity - number of types - one row only<br>type size (mm) |     |     |     |     |     |     |
|-------------|---|-----|-----|-----|-----|-----|-----|
|             | 1.0   | 1.5 | 2.0 | 2.5 | 3.0 | 4.0 | 5.0 |
| PH3.2-40    | 24  | 24  | —   | —   | —   | —   | —   |
| PH6.35-60   | —   | —   | 30  | 25  | 18  | —   | —   |
| PH8.0-50    | —   | —   | —   | —   | —   | 12  | 10  |

### SHANKS

| Ref         | Size              |
|-------------|-------------------|
| HMS 0630    | 6mm dia x 30mm    |
| HMS 0835    | 8mm dia x 35mm    |
| HMS 1040    | 10mm dia x 40mm   |
| HMS 1647    | 16mm dia x 47mm   |
| HMS 2025    | 20mm dia x 25mm   |
| HMS 2040    | 20mm dia x 40mm   |
| HMS 25.4-40 | 25.4mm dia x 40mm |

